



Preliminary Utility Report

I-20 Improvement Project Design-Build
Preparation On-Call

SCDOT Project ID# P027003

Lexington County, South Carolina
September 1, 2015



Contents

1	Project Summary
2	Project Location Maps
3	Existing Utility Data
4	Prior Rights Assessment
5	Preliminary Relocation Recommendations
6	Contact Information



This page is intentionally left blank.

1 Project Summary

The South Carolina Department of Transportation (SCDOT) proposes to widen Interstate 20 (I-20) from a four-lane divided highway to a six-lane divided highway. The project limits begin 1 mile west of U.S. 378 near mile marker 60 between the Meadow Glen Elementary and Middle Schools and ends approximately 1 mile past S-204 (Longs Pond Road). Within these limits, I-20 currently serves as an east-west four-lane divided interstate highway. The scope of the project includes adding a travel lane in each direction on I-20, improving various exit ramps, replacing or widening the parallel mainline bridges over Norfolk Southern Railroad, safety improvements to various intersections, and a potential noise wall along Ginny Lane. The purpose of the project is to improve the operation and efficiency of I-20 by increasing the capacity of the interstate. The proposed widening along I-20 will be located within the existing median.

The SCDOT has contracted with HDR | ICA to provide preliminary engineering studies to support a design-build contract for the project. One of the preliminary engineering studies includes the preliminary utility coordination and the development of a Preliminary Utility Report.

The Preliminary Utility Report has been developed to identify utility impacts within the I-20 project area as well as potential impacts along connecting roadways. The roadway systems included in the evaluation are shown below:

- U.S. Route 1 (Augusta Road) for approximately 650 feet westbound.

- S.C. Route 6 (South Lake Drive) for approximately 1,650 feet westbound and 1,400 feet eastbound.

- Longs Pond Road for approximately 1000 feet westbound.

The information provided in this reports includes project location maps, field inventory of existing utilities, description of facilities, prior rights evaluation, preliminary relocation recommendations, and contact information for the utility owners.

2 Project Location Maps

Project location maps are included in this section with the project area shown. Preliminary interchange improvement schematics are also included as well as the proposed typical sections.

FED. RD. DIV. NO.	STATE	COUNTY	PROJECT ID	ROAD/ROUTE NO.	SHEET NO.
3	S.C.	LEXINGTON	0032098	I-20	

Begin Project
(Approx.) Sta. 223+00


US-378E
(Sunset Blvd.)



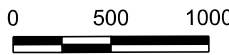
S-106
(Mineral Springs Rd.)

S-106
(Mineral Springs Rd.)

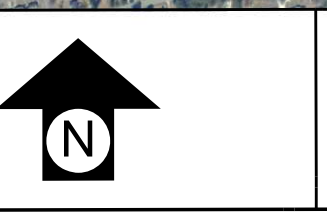
Legend

 - Project Boundary

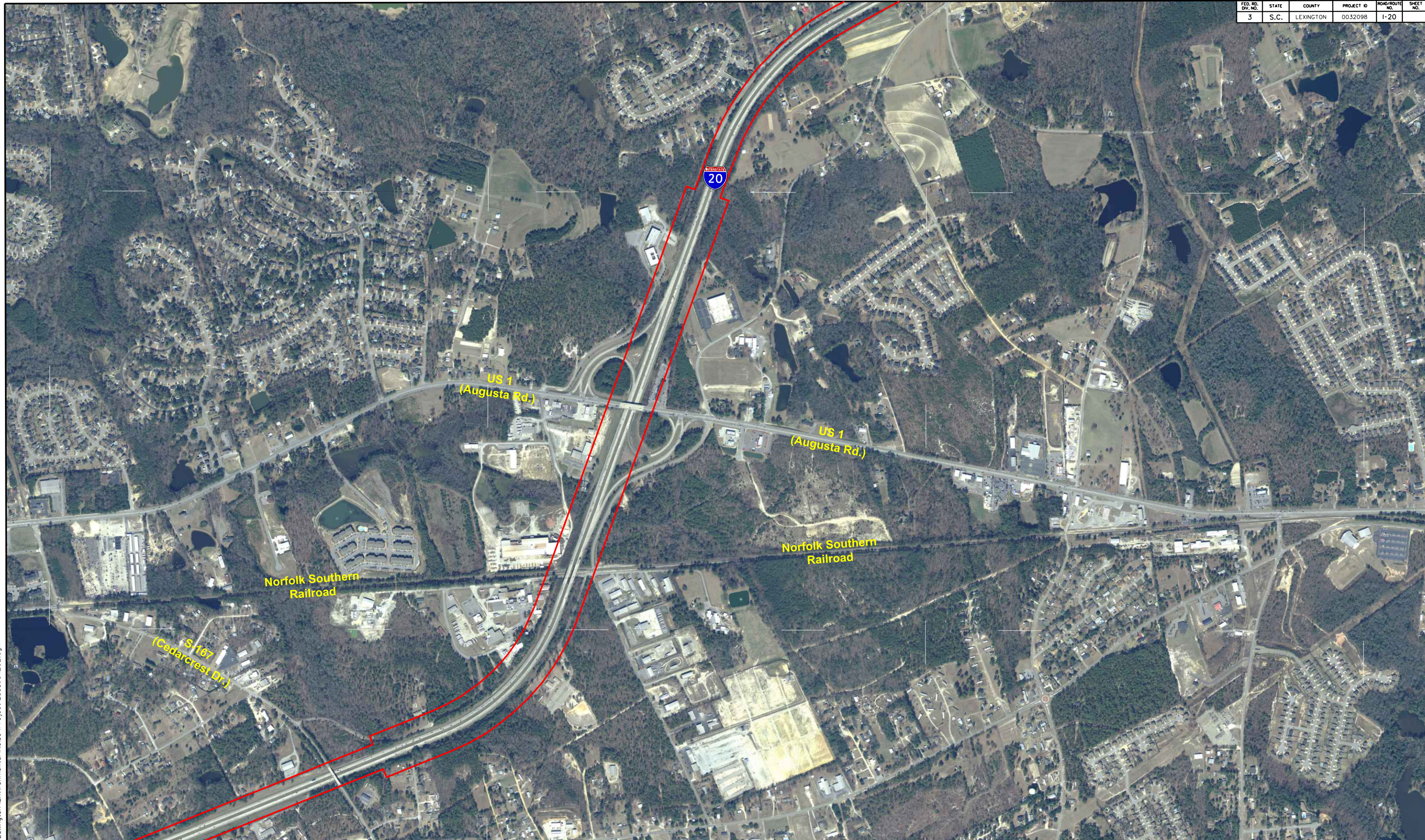
Interstate 20
Widening Project
Project Location
Lexington County, S.C.

SCALE  FEET

Aerial Map Source - USDA 2013



8/12/2015 L:\1404601\I-20 Lexington Environmental Noise\Project Location_01.dgn



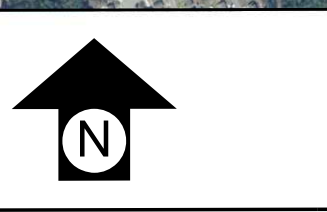
8/12/2015 L:\1404601\% I-20 Lexington Environmental Noise \Project Location_02.dgn

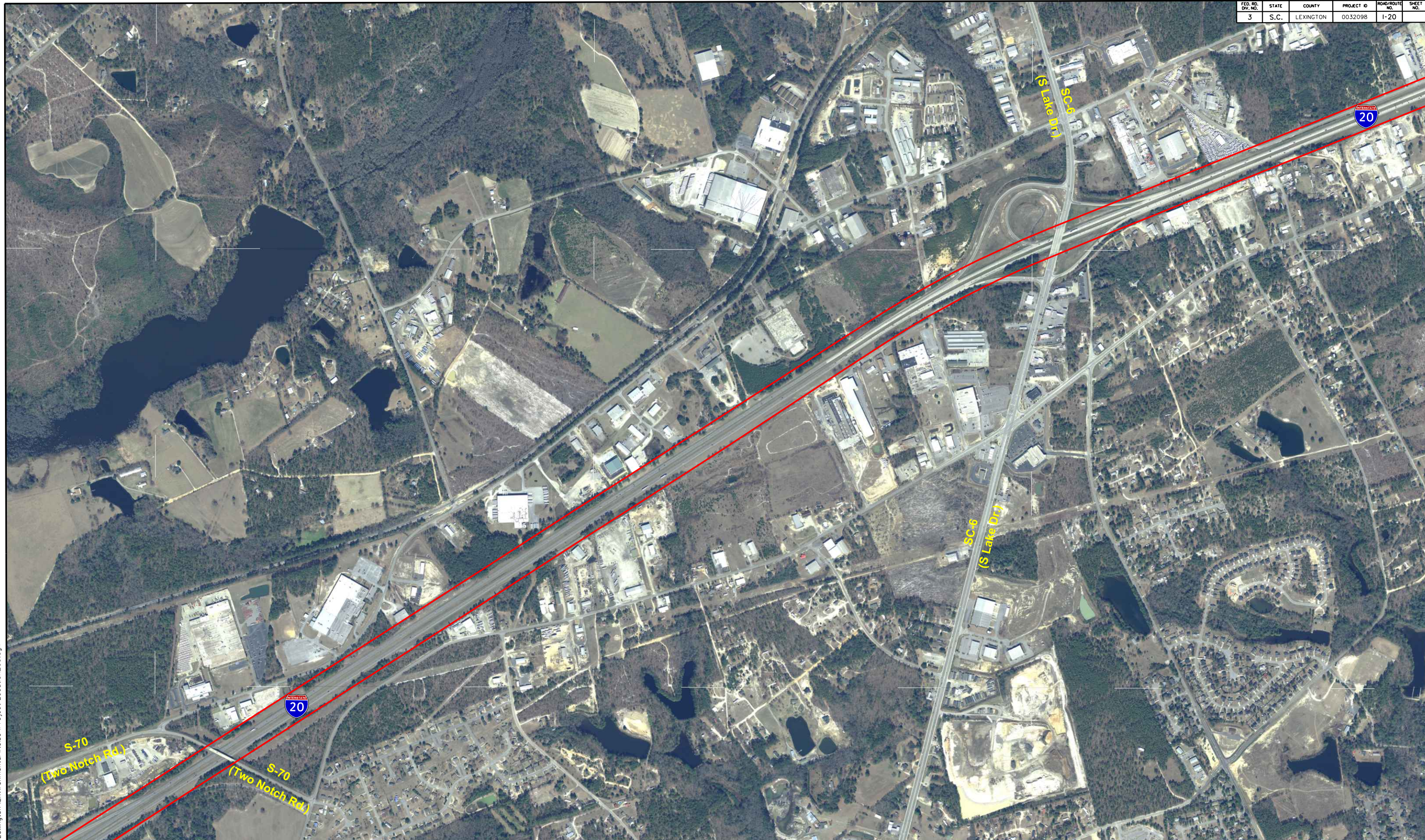
Legend

- Project Boundary

**Interstate 20
Widening Project
Project Location
Lexington County, S.C.**

SCALE FEET
 Aerial Map Source - USDA 2013





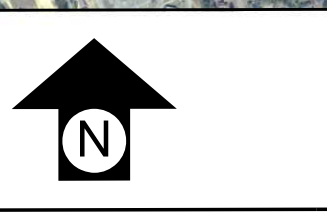
8/12/2015 L:\1404601\% I-20 Lexington Environmental Noise \Project Location_03.cgn

Legend

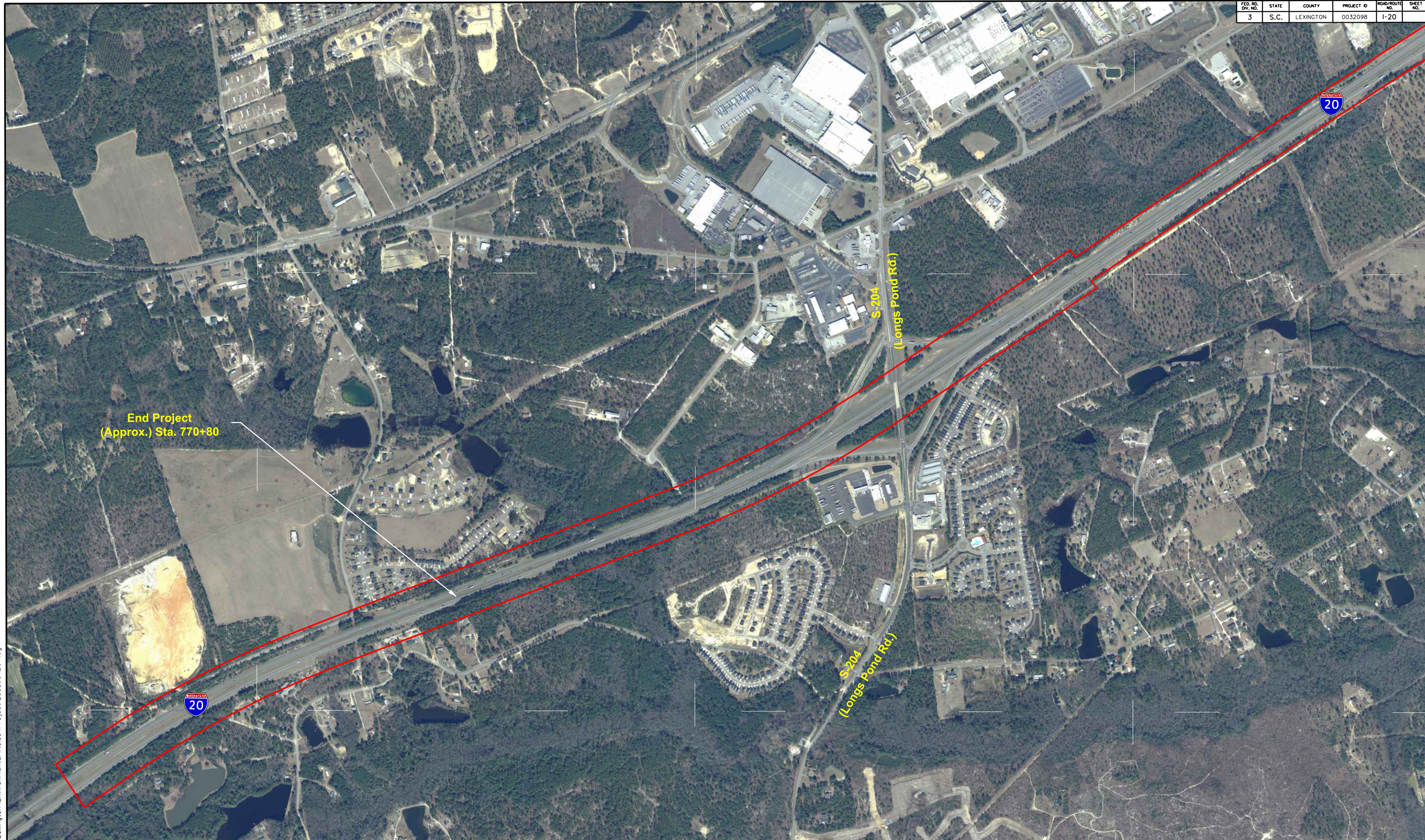
- Project Boundary

Interstate 20
Widening Project
Project Location
Lexington County, S.C.

SCALE FEET
Aerial Map Source - USDA 2013



FED. RD. DIV. NO.	STATE	COUNTY	PROJECT ID	ROAD/ROUTE NO.	SHEET NO.
3	S.C.	LEXINGTON	0032098	I-20	1-20




End Project
(Approx.) Sta. 770+80

S-204
(Longs Pond Rd.)

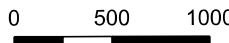
S-204
(Longs Pond Rd.)



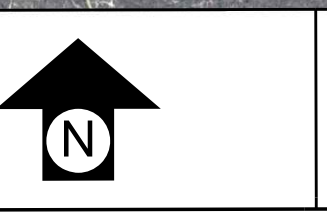
Legend

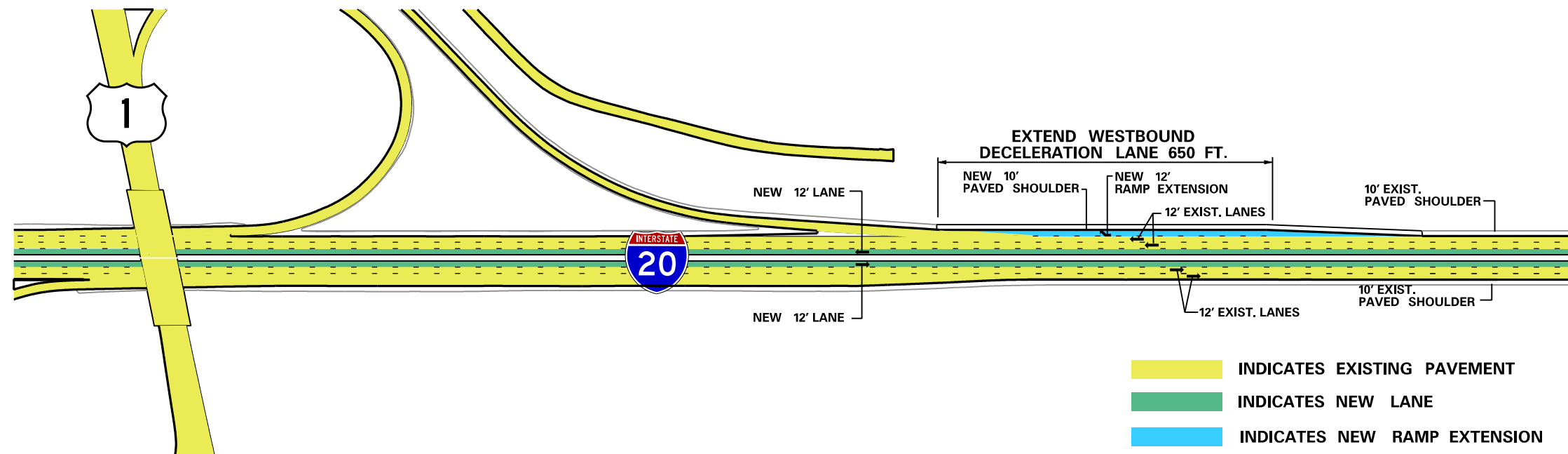
 - Project Boundary

Interstate 20
Widening Project
Project Location
Lexington County, S.C.

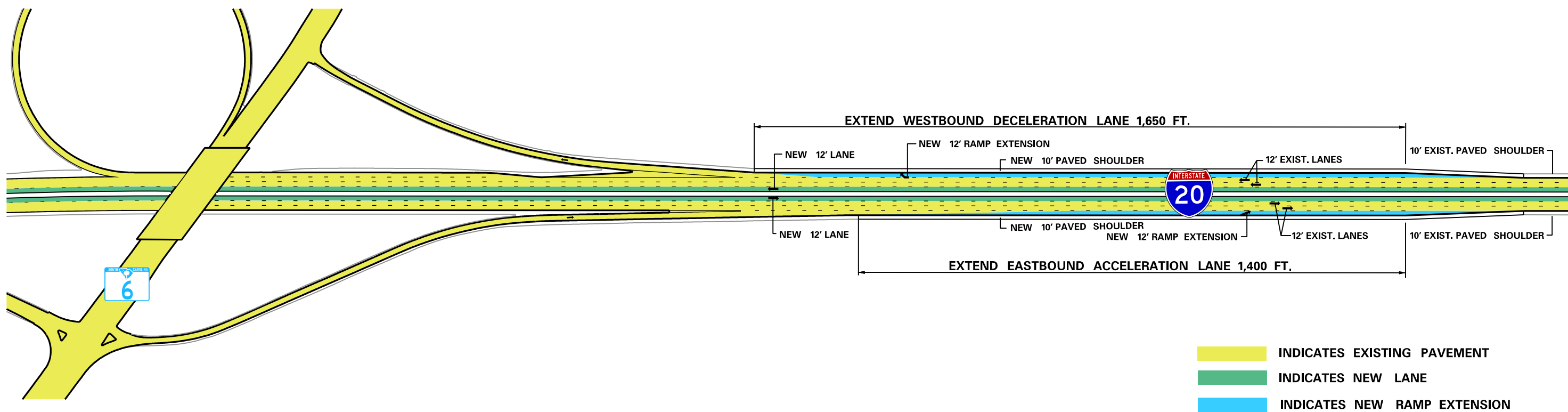
SCALE  FEET

Aerial Map Source - USDA 2013

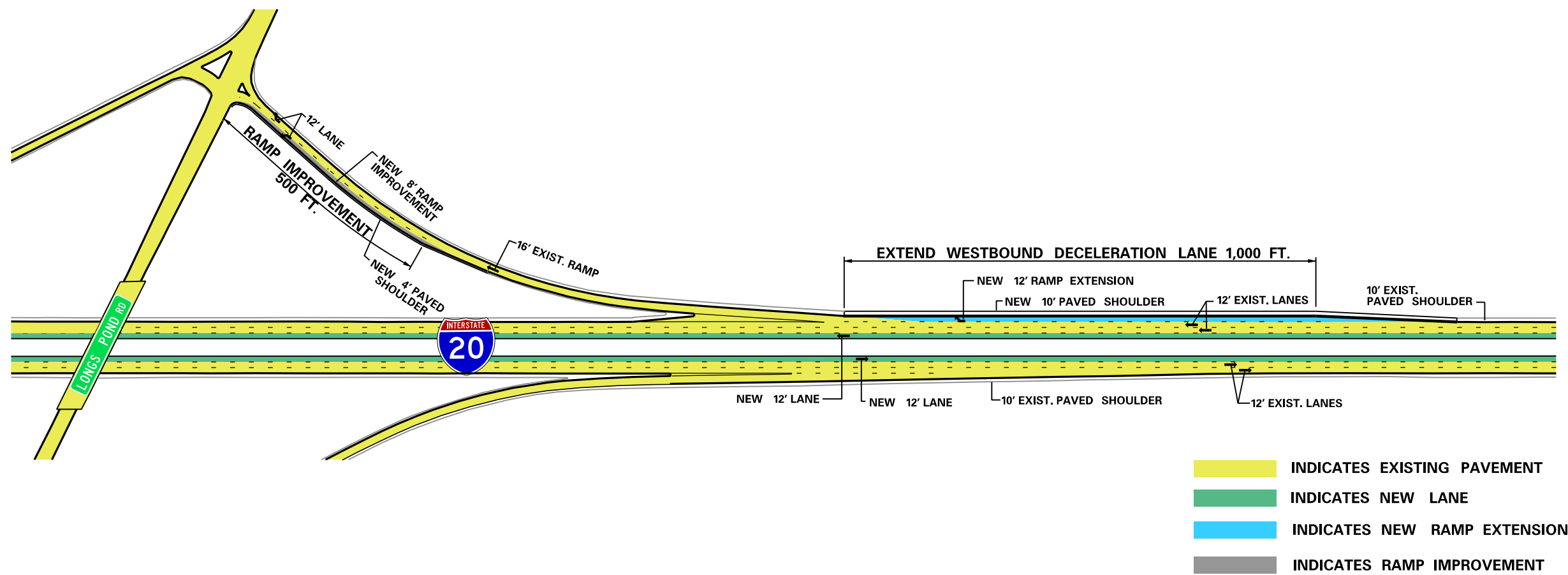




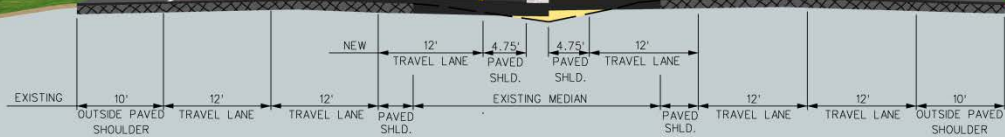
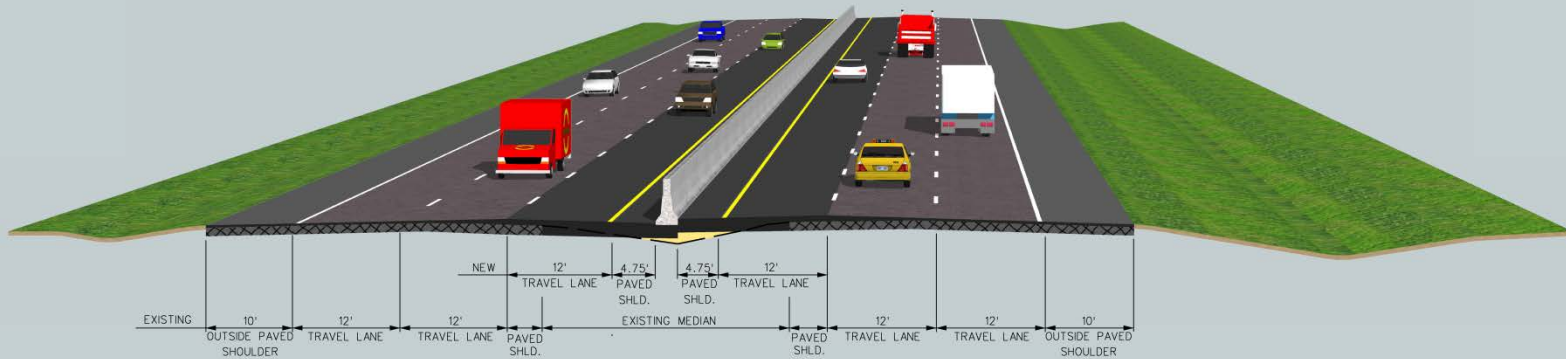
U.S. RTE. 1 INTERCHANGE RAMP IMPROVEMENTS



S.C. RTE. 6 INTERCHANGE RAMP IMPROVEMENTS



LONGS POND RD. INTERCHANGE RAMP IMPROVEMENTS

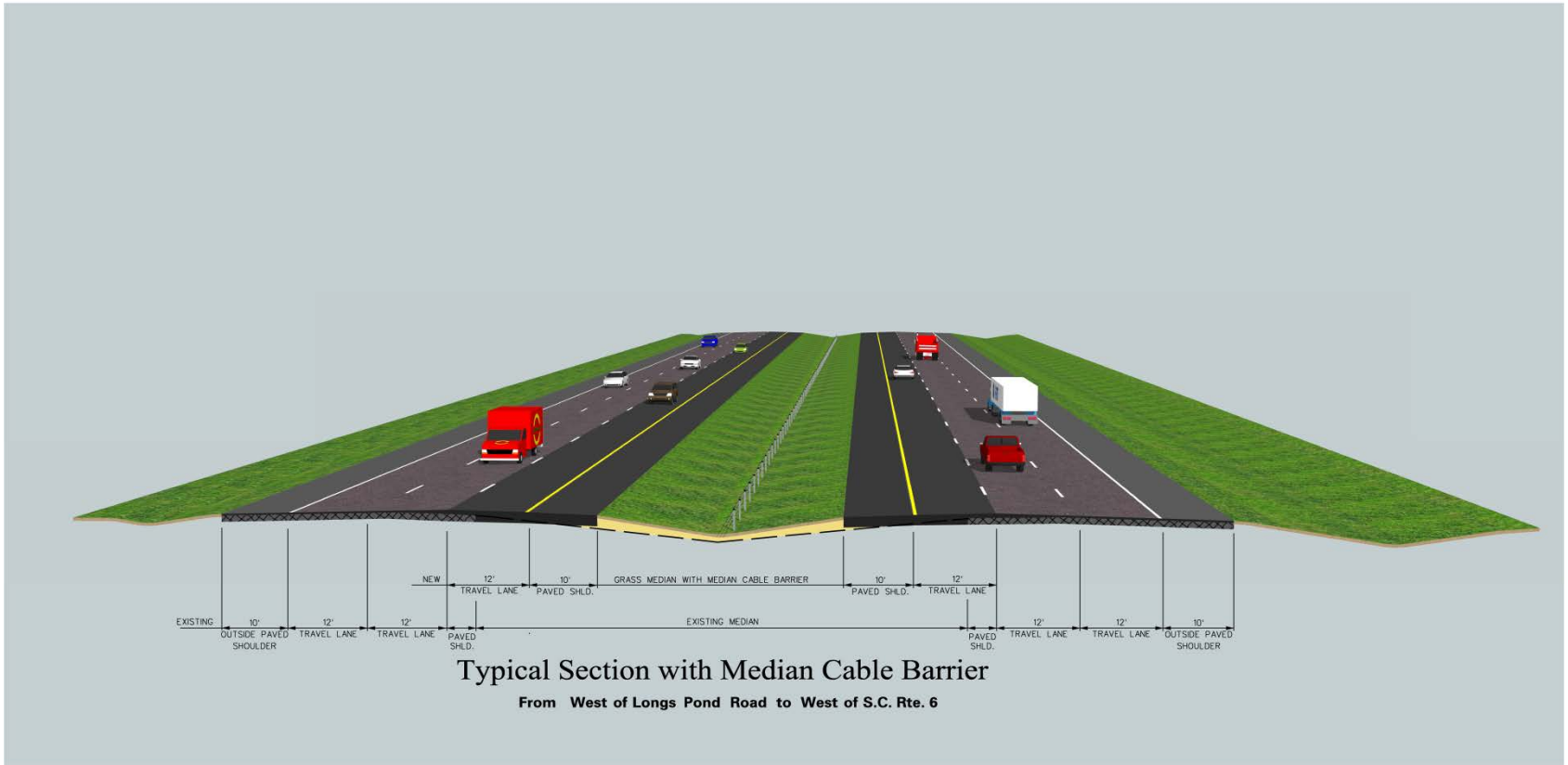


Typical Section with Concrete Median Barrier
From West of S.C. Rte. 6 to West of U.S. Rte. 378

Typical Sections

I-20 Widening

Lexington County



Typical Section with Median Cable Barrier

From West of Longs Pond Road to West of S.C. Rte. 6

Typical Sections

I-20 Widening

Lexington County

3 Existing Utility Data

Existing utility data along the project was identified through field reviews and direct contact with the utility owners in the project area. Existing utility data was requested for each utility identified in the project area. The locations were then reviewed in the field to verify the location and potential conflicts.

This section contains a summary of each utility owner and their existing facilities within the project area. Information is also provided regarding the potential for impacts and prior rights research.

Water and Sewer Data

City of West Columbia

The City of West Columbia maintains two water-lines in the project area.

- 24" diameter water-line interconnection between the City of West Columbia and the Town of Lexington. The water-line is located along Mineral Springs Road and crosses under I-20 east of the Mineral Springs Road Bridge over I-20. The water-line was constructed in a steel casing. (Figure 3.3)

Potential Conflict: Construction in this area is anticipated to be limited to the construction of the additional travel lanes in the median. Storm drainage improvements may include the addition of a pipe along the median. The potential for conflict with the water line is limited.

Prior Rights – The City of West Columbia does not plan to claim prior rights for the water-line.

- 20" diameter water-line which crosses I-20 near Leaphart Road and extends along U.S. Route 378. This crossing is outside of the anticipated project limits.

Lexington County Joint Municipal Water and Sewer Commission (JMWSC)

The Lexington County Joint Municipal Water and Sewer Commission maintains several utilities within the project area which may be impacted by the proposed construction.

- 12" diameter water line crossing under I-20 west of Two Notch Road Bridge over I-20. The water-line is located along Two Notch Road and continues within the Two Notch Road right-of-way. There was no known information on the depth of the line. (Figure 3.7)

Potential Conflict: Construction in this area is anticipated to be limited to the construction of the additional travel lanes in the median. Storm drainage improvements may include the addition of a pipe along the median. The potential for conflict with the water line is limited.

Prior Rights – The JMWSC does not plan to claim prior rights for the water line.

- 14" diameter sanitary sewer line crossing under I-20 approximately 4500 feet west of the Two Notch Road Bridge over I-20. There was no known information on the depth of the line. (Figure 3.8)

Potential Conflict: Construction in this area is anticipated to be limited to the construction of the additional travel lanes in the median. Storm drainage

improvements may include the addition of a pipe along the median. The potential for conflict with the sanitary sewer line is limited.

Prior Rights – The JMWSC does not plan to claim prior rights for the sanitary sewer line.

- 8” diameter sanitary sewer line crossing under I-20 west of Longs Pond Road. The line extends to Business Park Drive. There was no known information on the depth of the line. (Figure 3.9)

Potential Conflict: Construction in this area is anticipated to be limited to the construction of the additional travel lanes in the median. Storm drainage improvements may include the addition of a pipe along the median. The potential for conflict with the sanitary sewer line is limited.

Prior Rights – The JMWSC does not plan to claim prior rights for the sanitary sewer line.

- 8” diameter sanitary sewer line crossing under I-20 west of S.C. Route 6. The line extends to Litton Drive. There was no known information on the depth of the line. (Figure 3.6)

Potential Conflict: Construction in this area is anticipated to be limited to the construction of the additional travel lanes in the median. Storm drainage improvements may include the addition of a pipe along the median. The potential for conflict with the sanitary sewer line is limited.

Prior Rights – The JMWSC does not plan to claim prior rights for the sanitary sewer line.

Town of Lexington Utilities Department

The Town of Lexington maintains three water line crossings under I-20 within the project area.

- 10” diameter water-line crossing under I-20 from the intersection of Meat Plant Road & Alliance Road to the westbound Frontage Road. There was no known information on the depth of the line. The water line is located along Meat Plant Road. (Figure 3.4)

Potential Conflict: I-20 crosses over Meat Plant Road and therefore there are no potential conflicts with the water-line.

Prior Rights – The Town of West Columbia does not plan to claim prior rights for the water line.

- 16” diameter water line crossing under I-20 west of the S.C. Route 6. The water line extends from Porsche Drive to Litton Drive. There was no known information on the depth of the line. (Figure 3.6)

Potential Conflict: Construction in this area is anticipated to be limited to the construction of the additional travel lanes in the median. Storm drainage improvements may include the addition of a pipe along the median. The potential for conflict with the sanitary sewer line is limited.

Prior Rights – The Town of Lexington does not plan to claim prior rights for the water line.

- 8” diameter sanitary sewer line crossing under I-20 west of U.S. Route 1. The sanitary sewer line crosses from Dooley Road to Brickyard Road. There was no known information on the depth of the line. (Figure 3.4)

Potential Conflict: Construction in this area is anticipated to be limited to the construction of the additional travel lanes in the median. Storm drainage improvements may include the addition of a pipe along the median. The potential for conflict with the sanitary sewer line is limited.

Prior Rights – The Town of West Columbia does not plan to claim prior rights for the sanitary sewer line.

Gas Data

SCE&G Gas

SCE&G Gas has four gas line crossings under I-20 within the project area.

- Gas line crossing under I-20 west of U.S. Route 378. This crossing is outside of the anticipated project limits. There was no known information on the depth of the line.
- Gas line crossing under I-20 east of U.S. Route 1. There was no known information on the depth of the line. (Figure 3.4)

Potential Conflict: Construction in this area is anticipated to be limited to the construction of the additional travel lanes in the median. Storm drainage improvements may include the addition of a pipe along the median. The potential for conflict with the gas line is limited.

Prior Rights – SCE&G claims prior rights for the gas line utility.

- Gas line crossing under I-20 west of S.C. Route 6. There was no known information on the depth of the line. (Figure 3.6)

Potential Conflict: Construction in this area is anticipated to be limited to the construction of the additional travel lanes in the median. Storm drainage improvements may include the addition of a pipe along the median. The potential for conflict with the gas line is limited.

Prior Rights – SCE&G claims prior rights for the gas line utility.

- Gas line crossing under I-20 east of Longs Pond Road. The gas line crosses near Whipoorwill Road and extends to the Michelin industrial facility. There was no known information on the depth of the line. (Figure 3.8)

Potential Conflict: Construction in this area is anticipated to be limited to the construction of the additional travel lanes in the median. Storm drainage improvements may include the addition of a pipe along the median. The potential for conflict with the gas is limited.

Prior Rights – SCE&G claims prior rights for the gas line utility.

Dominion Carolina Gas Transmission

Dominion Carolina Gas Transmission maintains one gas line crossing under I-20 within the project area.

- Gas line crossing under I-20 west of S.C. Route 6. The gas line was constructed in 1959, prior to construction of I-20. Dominion Carolina Gas maintains a 50' right-of-way in the project area. There was no known information on the depth of the line. (Figure 3.7)

Potential Conflict: Construction in this area is anticipated to be limited to the construction of the additional travel lanes in the median. Storm drainage improvements may include the addition of a pipe along the median. The potential for conflict with the gas line is limited.

Prior Rights – Dominion Carolina Gas claims prior rights for the gas line utility.

Electrical Data

SCE&G Power Transmission

SCE&G maintains three aerial transmission line crossings over I-20 within the project area.

- Transmission line crossing approximately 3,500 feet west of U.S. Route 378. The transmission lines will cross over the location of the proposed noise wall.

Potential Conflict: There is no potential impact to the utility poles. Utility line clearance may be in conflict with the typical safety area for the utility line. Further coordination will be required with SCE&G to identify potential conflicts and the need to raise the transmission lines.

Prior Rights – SCE&G claims prior rights for the transmission line.

- Transmission line crossing approximately 8,000 feet west of U.S. Route 378. The crossing is located on skew. The transmission lines will cross over the location of the proposed noise wall. (Figure 3.2)

Potential Conflict: There is no potential impact to the utility poles. Utility line clearance may be in conflict with the typical safety area for the utility line. Further coordination will be required with SCE&G to identify potential conflicts and the need to raise the transmission lines.

Prior Rights – SCE&G claims prior rights for the transmission line.

- Transmission line crossing approximately 10,000 feet west of U.S. Route 378. (Figure 3.2 / 3.3)

Potential Conflict: There is no potential impact to the utility poles. Coordination will be required prior to construction to verify the appropriate clearance is maintained for the aerial utilities. Potential impacts during construction will also need to be evaluated.

Prior Rights – SCE&G claims prior rights for the transmission line.

- Transmission line crossing approximately 2,500 feet east of Longs Pond Road. (Figure 3.8)

Potential Conflict: There is no potential impact to the utility poles. Coordination will be required prior to construction to verify the appropriate clearance is maintained for the aerial utilities. Potential impacts during construction will also need to be evaluated.

Prior Rights – SCE&G claims prior rights for the transmission line.

SCE&G Power Distribution

SCE&G maintains multiple aerial distribution line crossings over I-20 within the project area.

- Aerial electrical line crossing approximately 3,000 feet west of U.S. Route 1. (Figure 3.5)
 - Potential Conflict:** There is no potential impact to the utility poles. Existing distribution lines will likely need to be raised to maintain appropriate clearances for construction. Coordination will be required during construction.
 - Prior Rights** – SCE&G does not plan to claim prior rights for the distribution line unless pole relocations are required outside of existing right-of-way.
- Aerial electrical line crossing approximately 4,700 feet west of U.S. Route 1. (Figure 3.5)
 - Potential Conflict:** There is no potential impact to the utility poles. Existing distribution lines will likely need to be raised to maintain appropriate clearances for construction. Coordination will be required during construction.
 - Prior Rights** – SCE&G does not plan to claim prior rights for the distribution line unless pole relocations are required outside of existing right-of-way.
- Aerial electrical line crossing along U.S. Route 1 at the I-20 Interchange. The utility line is attached to poles located along U.S. Route 1. (Figure 3.4)
 - Potential Conflict:** There is no potential impact to the utility poles. Based on the anticipated construction, there is limited potential for impacts to utility lines along U.S. Route 1.
 - Prior Rights** – SCE&G does not plan to claim prior rights for the distribution line unless pole relocations are required outside of existing right-of-way.
- Aerial electrical line crossing along Cedarcrest Drive. The utility line is attached to poles located along Cedarcrest Drive. There is no anticipated construction along Cedarcrest Drive and therefore no potential conflicts. (Figure 3.5)
- Aerial electrical line crossing along S.C. Route 6 at the I-20 Interchange. The utility line is attached to poles located along S.C. Route 6. (Figure 3.6)
 - Potential Conflict:** There is no potential impact to the utility poles. Based on the anticipated construction, there is limited potential for impacts to utility lines along S.C. Route 6.
 - Prior Rights** – SCE&G does not plan to claim prior rights for the distribution line unless pole relocations are required outside of existing right-of-way.
- Aerial electrical line crossing approximately 1500 feet west of S.C. Route 6. (Figure 3.6)
 - Potential Conflict:** There is no potential impact to the utility poles. Existing distribution lines will likely need to be raised to maintain appropriate clearances for construction. Coordination will be required during construction.
 - Prior Rights** – SCE&G does not plan to claim prior rights for the distribution line unless pole relocations are required outside of existing right-of-way.

- Aerial electrical line crossing along Two Notch Road. The utility line is attached to poles located along Two Notch Road. There is no anticipated construction along Two Notch Road and therefore no potential conflicts. (Figure 3.7)
- Aerial electrical line crossing approximately 7700 feet east of Longs Pond Road. (Figure 3.7 / 3.8)

Potential Conflict: There is no potential impact to the utility poles. Existing distribution lines will likely need to be raised to maintain appropriate clearances for construction. Coordination will be required during construction.

Prior Rights – SCE&G does not plan to claim prior rights for the distribution line unless pole relocations are required outside of existing right-of-way.

Mid-Carolina Electric Cooperative

Mid-Carolina Electric Cooperative maintains two aerial crossings over I-20 within the project area.

- Aerial electrical line crossing over I-20 along Mineral Springs Road. There is no anticipated construction along Mineral Springs Road and therefore no potential conflicts. (Figure 3.3)
- Aerial electrical crossing over I-20 approximately 4800 feet east of U.S. Route 1. (Figure 3.3)

Potential Conflict: There is no potential impact to the utility poles. Existing distribution lines will likely need to be raised to maintain appropriate clearances for construction. Coordination will be required during construction.

Prior Rights – Mid-Carolina Electric Cooperative does not plan to claim prior rights for their utility lines.

Telecommunications Data

AT&T (Telephone)

There are no AT&T utilities within the project area.

Century Link (Communications)

There are no Century Link utilities within the project area.

Time Warner Cable (Communications & Cable)

Time Warner Cable maintains two aerial crossings of I-20 within the project area.

- Aerial utility crossing along U.S. Route 1 at the I-20 Interchange. The utility line is located on utility poles along U.S. Route 1. (Figure 3.4)

Potential Conflict: Based on the anticipated construction, there is limited potential for impacts to utility lines along U.S. Route 1.

Prior Rights – Time Warner Cable does not plan to claim prior rights for their utility lines.

- Aerial utility line crossing along SC Route 6 at the I-20 Interchange. The utility line is attached to poles located along S.C. Route 6. (Figure 3.6)

Potential Conflict: Based on the anticipated construction, there is limited potential for impacts to utility lines along S.C. Route 6.

Prior Rights – Time Warner Cable does not plan to claim prior rights for their utility lines.

Comporium Midlands (Communications)

Comporium maintains four aerial crossings and one underground crossing along I-20 within the project area.

- Aerial utility crossing west of U.S. Route 378 at the I-20 Interchange. The Comporium utility lines are attached to utility poles running along U.S. Route 378. The utility is outside of the project limits and there is not potential for conflicts.
- Aerial utility crossing along U.S. Route 1 at the I-20 Interchange. The utility line is located on utility poles along U.S. Route 1. (Figure 3.4)

Potential Conflict: Based on the anticipated construction, there is limited potential for impacts to utility lines along U.S. Route 1.

Prior Rights – Comporium does not plan to claim prior rights for their utility lines.

- Aerial utility line crossing along SC Route 6 at the I-20 Interchange. The utility line is attached to poles located along S.C. Route 6. (Figure 3.6)

Potential Conflict: Based on the anticipated construction, there is limited potential for impacts to utility lines along S.C. Route 6.

Prior Rights – Comporium does not plan to claim prior rights for their utility lines.

- Aerial utility line crossing along Two Notch Road. The utility line is attached to poles located along Two Notch Road. There is no anticipated construction along Two Notch Road and therefore no potential conflicts. (Figure 3.7)
- 4" diameter underground utility crossing west of the Longs Pond Road Interchange. The utility was placed in a 4" HDPE conduit. The utility lines continues along Longs Pond Road. (Figure 3.9)

Potential Conflict: Construction in this area is anticipated to be limited to the construction of the additional travel lanes in the median. Storm drainage improvements may include the addition of a pipe along the median. The potential for conflict with the sanitary sewer line is limited.

Prior Rights – Comporium does not plan to claim prior rights for their utility lines.

Windstream South Carolina (Communications)

Windstream maintains two underground utility crossings under I-20 within the project area.

- Underground fiber-optic utility crossing along S.C. Route 6 at the I-20 Interchange. There was no known information on the depth of the line. (Figure 3.6)

Potential Conflict: Construction in this area is anticipated to be limited to the construction of the additional travel lanes in the median. Storm drainage improvements may include the addition of a pipe along the median. The potential for conflict with the water line is limited.

Prior Rights – Windstream does not plan to claim prior rights for their utility lines.

- Underground fiber-optic utility crossing along Longs Pond Road at the I-20 Interchange. There was no known information on the depth of the line. (Figure 3.9)

Potential Conflict: Construction in this area is anticipated to be limited to the construction of the additional travel lanes in the median. Storm drainage improvements may include the addition of a pipe along the median. The potential for conflict with the water line is limited.

Prior Rights – Windstream does not plan to claim prior rights for their utility lines.

SCDOT ITS Data

The SCDOT maintains an overhead changeable message sign along eastbound I-20 between S.C. Route 6 and U.S. Route 1. The changeable message sign will be impacted as the result of construction in the median. The changeable message sign will need to be replaced as a result of this project.



U.S. ROUTE 378

20

SCE&G POWER TRANSMISSION CROSSING

I-20 IMPROVEMENT
PROJECT

FIGURE 3.1
UTILITY COORDINATION

SCALE: 1" = 600'



SCE&G POWER TRANSMISSION CROSSING



SCE&G POWER TRANSMISSION CROSSING

I-20 IMPROVEMENT PROJECT
FIGURE 3.2
UTILITY COORDINATION
SCALE: 1" = 600'



SCE&G POWER TRANSMISSION CROSSING

MINERAL SPRINGS ROAD

CITY OF WEST COLUMBIA
24" WATER CROSSING
AT MINERAL SPRINGS ROAD



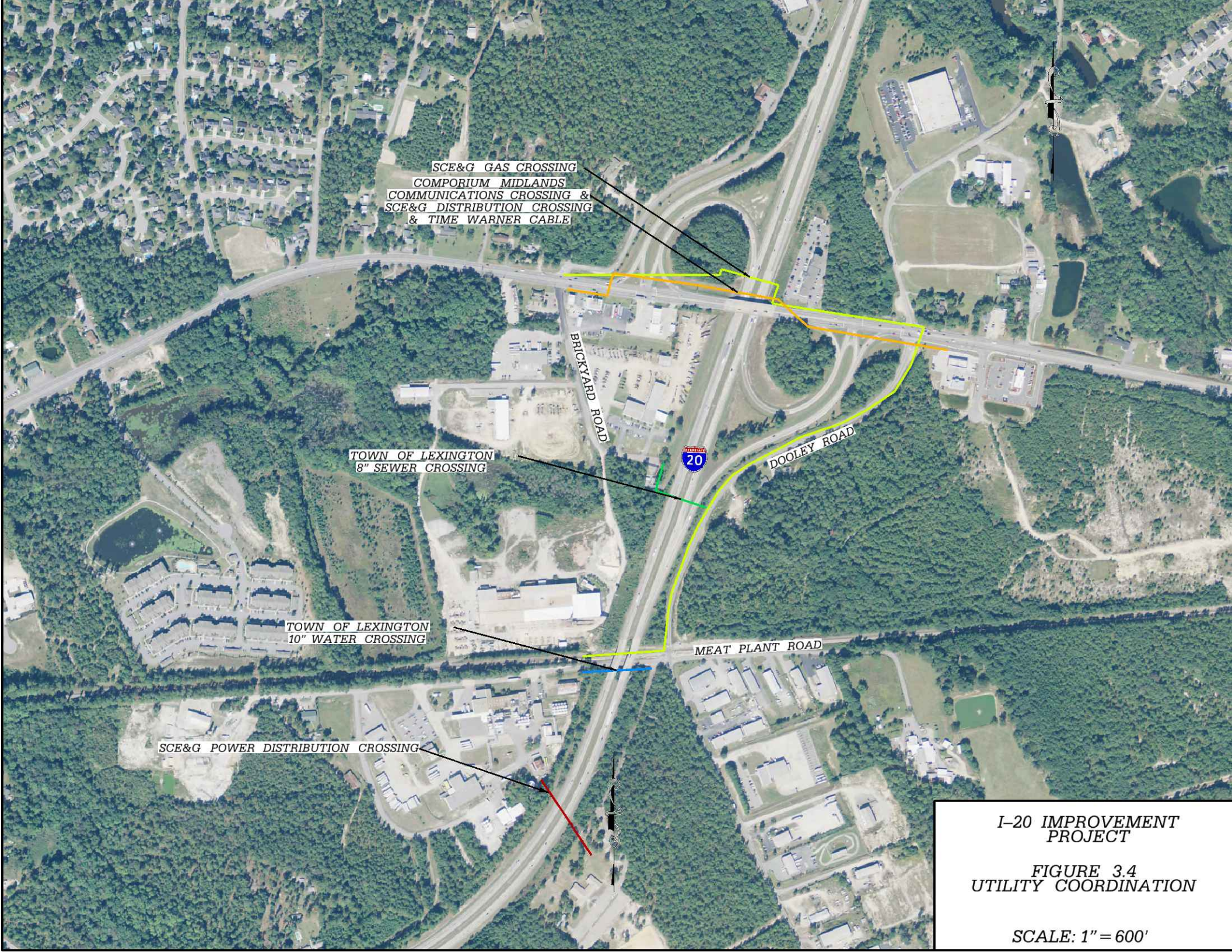
MID-CAROLINA ELECTRIC COOPERATIVE
CROSSING

MID-CAROLINA ELECTRIC COOPERATIVE
CROSSING

I-20 IMPROVEMENT
PROJECT

FIGURE 3.3
UTILITY COORDINATION

SCALE: 1" = 600'



SCE&G GAS CROSSING
COMPORIUM MIDLANDS
COMMUNICATIONS CROSSING &
SCE&G DISTRIBUTION CROSSING
& TIME WARNER CABLE

TOWN OF LEXINGTON
8" SEWER CROSSING

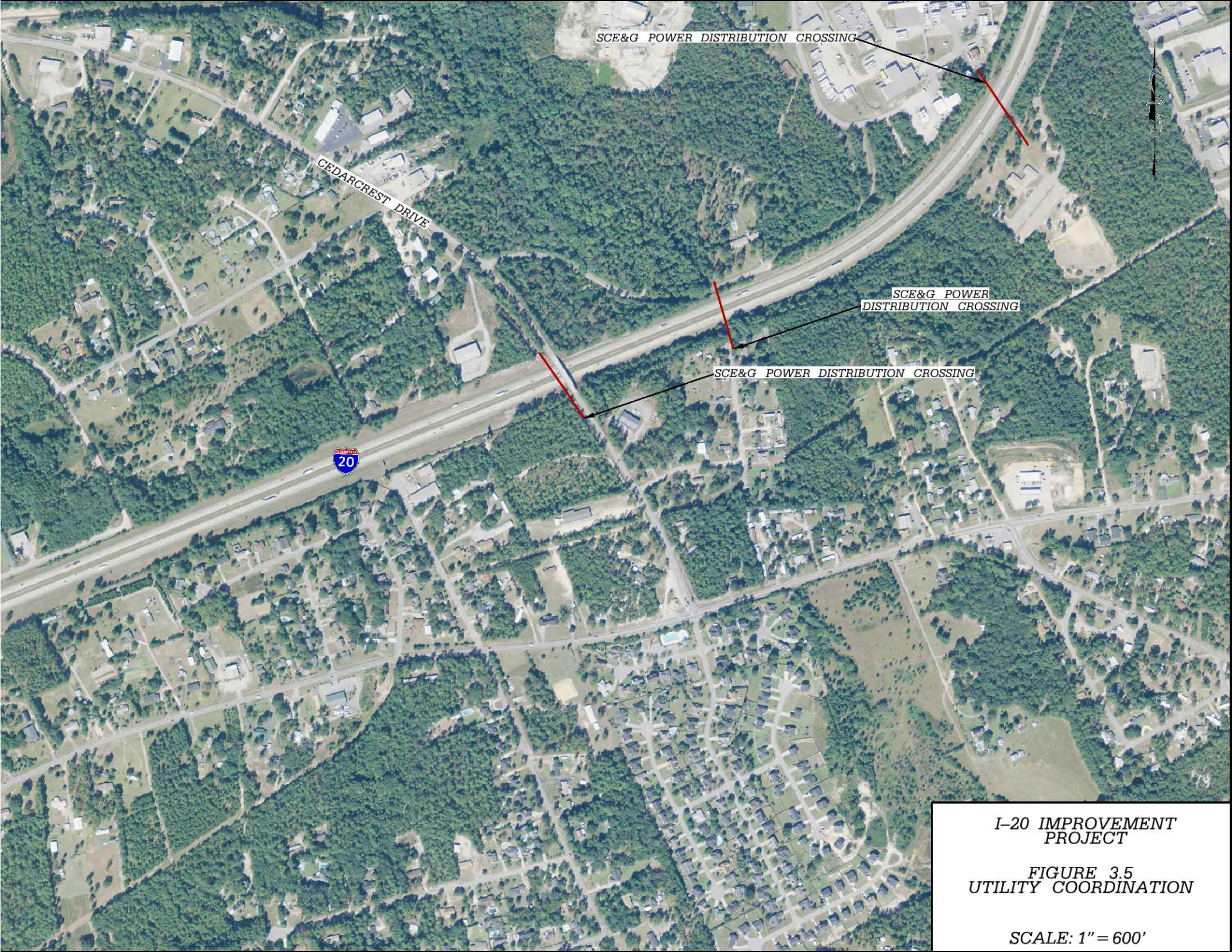
TOWN OF LEXINGTON
10" WATER CROSSING

SCE&G POWER DISTRIBUTION CROSSING

I-20 IMPROVEMENT
PROJECT

FIGURE 3.4
UTILITY COORDINATION

SCALE: 1" = 600'



SCE&G POWER DISTRIBUTION CROSSING

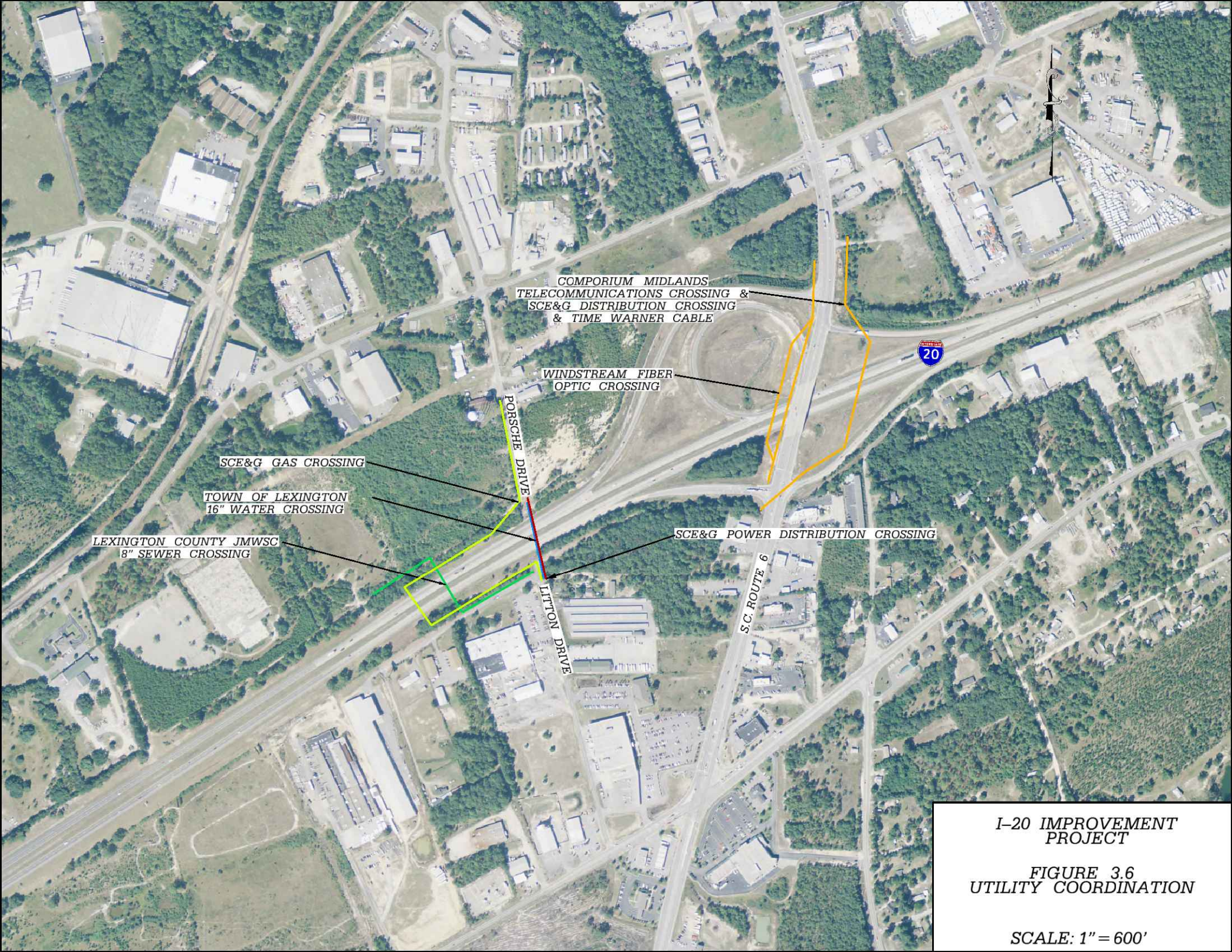
CEDARCREST DRIVE



SCE&G POWER DISTRIBUTION CROSSING

SCE&G POWER DISTRIBUTION CROSSING

I-20 IMPROVEMENT PROJECT
FIGURE 3.5
UTILITY COORDINATION
SCALE: 1" = 600'



COMPORIUM MIDLANDS
TELECOMMUNICATIONS CROSSING &
SCE&G DISTRIBUTION CROSSING &
TIME WARNER CABLE

WINDSTREAM FIBER
OPTIC CROSSING

SCE&G GAS CROSSING

TOWN OF LEXINGTON
16" WATER CROSSING

LEXINGTON COUNTY JMWSC
8" SEWER CROSSING

SCE&G POWER DISTRIBUTION CROSSING

PORSCHE DRIVE

LITTON DRIVE

S.C. ROUTE 6



**I-20 IMPROVEMENT
PROJECT**

**FIGURE 3.6
UTILITY COORDINATION**

SCALE: 1" = 600'



DOMINION CAROLINA GAS
TRANSMISSION CROSSING

COMPORIUM MIDLANDS
TELECOMMUNICATIONS CROSSING &
SCE&G DISTRIBUTION CROSSING

LEXINGTON COUNTY JMWSC
12" WATER CROSSING

TWO NOTCH ROAD

SCE&G POWER DISTRIBUTION CROSSING

I-20 IMPROVEMENT
PROJECT

FIGURE 3.7
UTILITY COORDINATION

SCALE: 1" = 600'



SCE&G POWER DISTRIBUTION CROSSING

LEXINGTON COUNTY JMWSC
14" SEWER CROSSING

SCE&G POWER TRANSMISSION CROSSING

SCE&G GAS CROSSING



I-20 IMPROVEMENT
PROJECT

FIGURE 3.8
UTILITY COORDINATION

SCALE: 1" = 600'



BUSINESS PARK ROAD

LONGS POND ROAD

COMPORIUM MIDLANDS
TELECOMMUNICATIONS CROSSING

WINDSTREAM FIBER
OPTIC CROSSING

LEXINGTON COUNTY JMWSC
8" SEWER CROSSING



**I-20 IMPROVEMENT
PROJECT**

**FIGURE 3.9
UTILITY COORDINATION**

SCALE: 1" = 600'

4 Prior Rights Assessment

Each utility owner was contacted concerning their intentions to claim prior rights. For the preliminary utility study, prior rights documentation was not provided by the utility companies. The following is a summary of the preliminary coordination of Prior Rights along the project.

Water and Sewer

City of West Columbia – City of West Columbia water lines cross through SCDOT right-of-way. The City does not plan to request prior rights for this project.

Lexington County Joint Municipal Water and Sewer Commission (JMWSC) – JMWSC water and sewer lines cross through SCDOT right-of-way. JMWSC does not plan to request prior rights for this project.

Town of Lexington – The Town of Lexington water and sewer lines cross through SCDOT right-of-way. The Town does not plan to request prior rights for this project.

Gas

SCE&G Gas – SCE&G Gas maintains three gas line crossings of I-20 along the interchanges within the project area. Based on coordination with SCE&G, they will request prior rights if their lines are to be relocated. Further review of SCE&G lines indicate their lines are most likely located within right-of-way along intersection routes. Further research and coordination will be required during the construction phase to establish the prior rights determination.

Dominion Carolina Gas Transmission – Dominion Carolina Gas has claimed prior rights for their existing gas transmission crossing. They have documentation showing gas line corridor was in place prior to construction of I-20. Upon verification of prior rights, the SCDOT will be responsible for any relocation work for the gas line.

Electrical

SCE&G Power Transmission and Distribution – SCE&G maintains aerial crossings for transmission and distribution within the project area. Utility poles appear to be located within private easement and right-of-way. Impacts to major transmission lines are not anticipated. SCE&G will likely claim partial prior rights for pole relocations and replacement. The relocation costs for SCE&G infrastructure is likely to be shared by the SCE&G and SCDOT.

Mid-Carolina Electric Cooperative – Mid-Carolina maintains two aerial crossings over I-20. The utility poles appear to be located within right-of-way and therefore would not be considered a prior rights issue.

Telecommunications

Time Warner Cable – Time Warner Cable lines are attached to existing utility poles owned by others. Time Warner Cable does not plan to request prior rights for this project.

Comporium Midlands – Comporium maintains aerial and underground crossings of I-20. Their four aerial crossings are attached to existing pole lines. Comporium does not plan to request prior rights for these utility crossings.

Windstream South Carolian – Windstream maintains two underground crossings of I-20. The crossings are located at two interchanges and the utility lines follow the interseting side roads. Windstream does not plan to request prior rights for these utility crossings.

Final utility coordination will be required to firmly establish any prior rights along the project.

5 Preliminary Relocation Recommendations

Based on the preliminary utility data obtained for the project and the extent of preliminary design completed, there are no known utility relocations. SUE investigations, including QL-C, QL-B, and QL-A will be required to further locate the utilities.

Utility impacts may occur as the results of drainage improvements, wall installation, and traffic sign placement. The contractor will also be required to coordinate utility impacts during construction, specifically with aerial utility crossings along I-20.

A noise wall is proposed between I-20 and Ginny Lane from approximate Station 197+50 to 262+50. Based on the proposed layout, a SCE&G Transmission Line will cross the wall near the beginning and end of the proposed wall. The construction of the noise wall may impact the two SCE&G Transmission Line crossings.

Summary of Potential Utility Relocations:

Aerial Electrical Transmission Lines – Noise Wall Conflicts

- Potential Shared Cost or 100% cost of the utility.

Aerial Electrical Distribution Lines – Construction impacts or localized impacts to utility poles.

- SCDOT is not responsible for temporary relocations due to construction.
- Minimal cost associated with distribution lines. Potential shared cost.

Underground utility crosses in the median to facilitate construction of drainage improvements.

- Water and sanitary sewer relocations will be the responsibility of the utility owner.

SCDOT Overhead Message Board (Eastbound I-20)

- SCDOT responsible for 100% of cost.

Recommendations:

Perform Level C and Level B SUE investigation.

Coordinate with SCE&G on potential conflicts with Noise Walls. If utility lines are required to be raised, request early relocation prior to construction phase of design-build project.

Perform Level A test holes for underground utility crossings as needed.

6 Contact Information

Water and Sewer

City of West Columbia
Sid Varn
200 North 12 th Street
PO Box 4044
West Columbia, SC 29171
803-957-4596
svarn@windstream.net

Lexington County Joint Municipal Water and Sewer Commission
Mr. Guy Schmoltze
PO Box 255
Lexington, SC 29071
803-359-8373
gshmoltze@lcjmwsc.com

Town of Lexington
Mr. Allan Lutz
111 Maiden Lane
Lexington, SC 29072
803-358-7261
aluta@lexsc.com

Gas

SCE&G Gas
Mr. Porter Johnson
100 SCANA Parkway
Mail Code K 50
Cayce, SC 29033
bvarner@scana.com

Dominion Carolina Gas Transmission
Mr. Buzz Prescott
220 Operations Way
Cayce, SC 29033
803-217-2189
Philip.prescott@carolinagastransmission.com

Electrical

SCE&G Electric
Mr Brett Varner
100 SCANA Parkway
Mail Code J 46
Cayce, SC 29033
803-217-2053
bvarner@scana.com

Mid-Carolina Electric Cooperative
Mr. Brian Sandifer
254 Longs Pond Road
Lexington, SC 29072
803-749-6481
brian@mcecoop.com

Telecommunications

AT&T
Mr. Steve Martine
1300 Catawba Street
Camden, SC 29020
803-424-0584
Sm6480@att.com

Century Link
Mr. Richard Browning
243F Burgess Road
Greensboro, NC 27107
703-363-8912
Dennis.browning@centurylink.com

Comporium Midlands
Mr. Steve Robinson
1660 Juniper Springs Road
Gilbert, SC 29054
803-894-1184
Steve.robinson@comporium.com

Time Warner Cable
Mr. Steve Jones
3347 Platt Springs Road
West Columbia, SC 29170
803-609-0719
Steve.jones@twcable.com

Winstream South Carolina
Mr. Christopher Meetze
4640 Augusta Road
Lexington, SC 29073
803-609-0719
Christopher.meetze@windstream.net